

# Manufacturer's Declaration of Conformity

This product has been manufactured in accordance with the harmonized European standards, following the provisions of the below stated directives:

CE 0434	93/42/EEC as amended by 2027/47/EC Medical Device Directive
---------	--


Please see separate document showing on sticker of device for above CE marking.

**Authorized EU Representative:**



**Wellkang Ltd**  
Suite B, 29 Harley Street  
LONDON, W1G 9QR, U.K.

**Manufactured by:**

 **Charder Electronic Co., Ltd.**  
No.103, Guozhong Rd., Dali Dist.,  
Taichung City 412, Taiwan (R.O.C.)

**FDA no.: D072478 / 3007074192**

**charder**<sup>®</sup>



**HM202P PortStad**  
Height Measurement

---

## **TABLE OF CONTENTS**

PREFACE.....	3
CLEANING.....	3
MAINTENANCE.....	3
SAFETY INSTRUCTIONS .....	3
WARRANTY .....	4
UNPACKING HM202P .....	5
SPECIFICATION .....	5
INSTRUCTION OF USE HM202P .....	6
STEP TO ACCURATE MEASUREMENT .....	7
USE WITH MS 6111, MS6110.....	8

## PREFACE

Thank you for choosing CHARDER MEDICAL product. All features of this product were designed to state of the art and are optimized for simple and straightforward use. If you have any queries or experience any problems not addressed in the operating instructions, please contact your CHARDER MEDICAL service partner, or visit us on the Internet at [www.chardermmedical.com](http://www.chardermmedical.com)

## CLEANING

To clean the measuring rod as required using cleaning agent or disinfectant agent.

## MAINTENANCE

The device does not require any routine maintenance. Daily wipe with water or cleaning agent to keep cleaning and disinfected is recommended.

## SAFETY INSTRUCTIONS

### Proper use

This height measuring rod is used to determine the height of persons while standing upright, or of lying babies, according to its model, in medical treatment localities. This height measuring rod is suitable to detect, prevent and survey diseases.

Ensure that the height measuring rod may only come into contact only with uninjured skin.

### Improper Use

The structure of the height measuring rod may not be modified. This may result in incorrect measuring results, safety-related defects as well as destruction.

The height measuring rod may only be used according to the described conditions.



### Safety Instructions

Observe operating instructions.

Please use no other than the supplied fixtures for mounting.

During assembling, ensure that screws are tightened properly and that the height measuring rod has been assembled correctly.

To prevent risk of injury, ensure that the head stop is returned to folded-in position after each use.

The body height measuring emits only reliable values, when the back and the head are straightly aligned, nevertheless the body height of a person may change about some cm during a day.

Never leave a baby on the surface unsupervised

When sliding the rod, ensure that baby is safely on the measuring area.

## WARRANTY

A eighteen months(18) warranty from date of delivery applies to defects attributable to poor materials or workmanship. Defects, which come under warranty, will be made good for the customer at no charge on production of the receipt. No further claims can be entertained. The costs of transport in both directions will be borne by the customer should the equipment be located anywhere other than the customer's premises. In the event of transport damage, claims under warranty can be honored only if the complete original packaging was used for any transport and the device secured and attached in that packaging just as it was when originally packed. All the packaging should therefore be retained.

A claim under warranty will not be honored if the equipment is opened by persons not expressly authorized by CharDer to do so.

We would ask our customers abroad to contact their local sales agent in the event of a warranty matter.

**PLEASE VISIT [WWW.CHARDERMEDICAL.COM](http://WWW.CHARDERMEDICAL.COM) FOR MORE INFORMATION.**

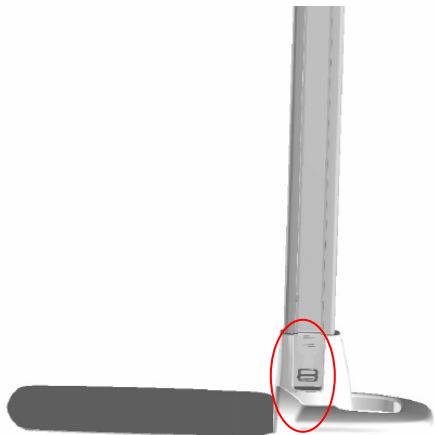
## USE WITH MS 6111, MS6110

※ The fixed point for hook can be adjusted when the portstad used with scales.

1. Upper hook with scale.



2. Lower hook without scale.



## UNPACKING HM202P

No.	Item	Quantity
1.	Support plate	2
2.	Head Stopper	1
3.	Base Platform	1
4.	Height Rod	1
5.	Tape Measure	1
6.	User Manual	1

## SPECIFICATION

Measuring range: 20 ~ 205 cm

Graduations: 1mm

Accuracy:  $\pm 10$ mm

Base dimensions (WxD): 406 x365 mm

Height Rod dimension: 406 x 585 x 2200 mm

Weight: 4.9kg

Temperature range:  $+10^{\circ}\text{C}$  up to  $+40^{\circ}\text{C}$

## INSTRUCTION OF USE HM202P

1. Use the support plate against the wall carefully



2. Pull down the tape measure from the top of the portstad.

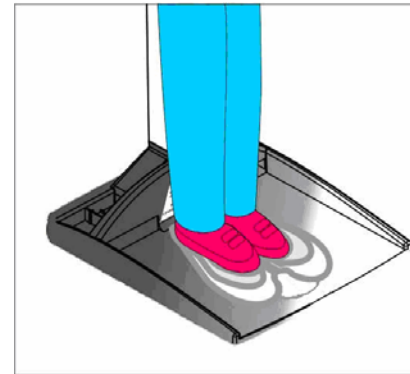


3. Hook up the Block piece at the bottom to fix the tape measure.

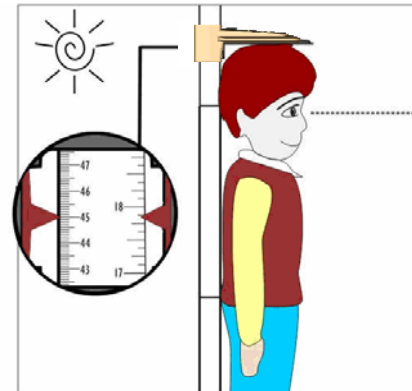


4. Start the measuring process

## STEP TO ACCURATE MEASUREMENT

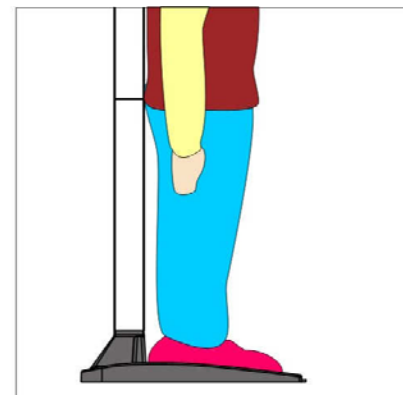


1. Stand up straight at the central of base plate



2. Have patient's back slightly touches the rod

3. Move head stopper down to the top of head



4. Height is ready to be taken